

# Investor Information

---

## Honda Motor Co., Ltd.

### Company Information

---

- **Established** September 24, 1948
- **Lines of Business** Motorcycles, Automobiles, Financial Services and Power Products and Others
- **Fiscal year-end** March 31
- **Independent Registered Public Accounting Firm** KPMG AZSA & Co.
- **Web Site**
  - Corporate Web Site  
<http://www.honda.co.jp>
  - IR Web Sites  
[Japanese] <http://www.honda.co.jp/investors/>  
[English] <http://world.honda.com/investors/>

### Stock Information

---

- **Securities Code**  
7267
- **Number of Shares Authorized**  
7,086,000,000 shares
- **Total Number of Shares Issued**  
1,834,828,430 shares
- **Number of Shareholders**  
179,366
- **Number of Shares per Trading Unit**  
100 shares
- **Stock Exchange Listings**
  - [Japan]**  
Tokyo, Osaka, Nagoya, Fukuoka and Sapporo stock exchanges
  - [Overseas]**  
New York, London, Swiss and Paris stock exchanges  
Note: Honda has submitted requests for delisting from the Swiss and Paris stock exchange.
- **General Meeting of Shareholders**  
June
- **Record Dates for Dividends**  
June 30  
September 30  
December 31  
March 31

### IR Offices

---

- [JAPAN]**  
**Honda Motor Co., Ltd.**  
1-1, 2-chome, Minami-Aoyama, Minato-ku, Tokyo  
107-8556, Japan  
TEL: 81-(0)3-3423-1111 (Switchboard)
- [U.S.A.]**  
**Honda North America, Inc.**  
New York Office  
540 Madison Avenue, 32nd Floor,  
New York, NY 10022, U.S.A.  
TEL: 1-212-355-9191
- [U.K.]**  
**Honda Motor Europe Limited**  
Public Relations Division  
470 London Road, Slough,  
Berkshire SL3 8QY, U.K.  
TEL: 44 (0) 1753-590-590

### ■ Shareholders' Register Manager for Common Stock

The Chuo Mitsui Trust and Banking Co., Ltd.  
33-1, Shiba 3-chome, Minato-ku, Tokyo 105-8574, Japan

#### Contact Address:

The Chuo Mitsui Trust and Banking Co., Ltd.  
Stock Transfer Agency Dept. Operation Center  
8-4, Izumi 2-chome, Suginami-ku, Tokyo 168-0063, Japan  
TEL: 81-(0)3-3323-7111  
TEL: 0120-78-2031 (toll free within Japan)

### ■ Depository and Transfer Agent for American Depositary Receipts

JPMorgan Chase Bank, N.A.  
4 New York Plaza,  
New York, NY 10004, U.S.A.

#### Contact Address:

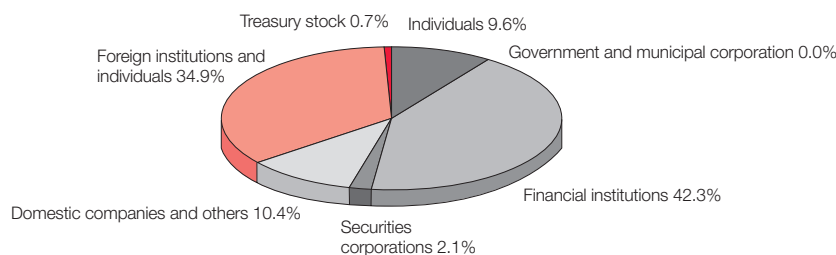
JPMorgan Service Center  
P.O. Box 3408  
South Hackensack, NJ 0706-3408  
TEL: 1-800-990-1135  
E-mail: adr@jpmorgan.com  
Ratio: 1 ADR = 1 share of underlying stock  
Ticker symbol: HMC

With respect to taxation and other matters relating to the acquisition, holding and disposition of the Company's common stock or ADRs by non-residents of Japan, please also refer to "Item 10E. Taxation" of Form 20-F included in the "Investor Relations" section on our website.

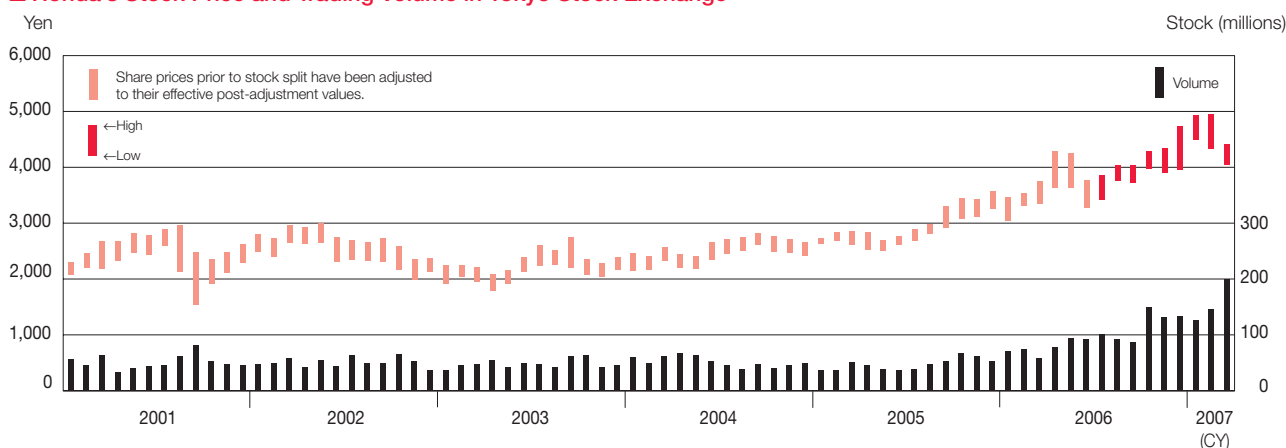
### ■ Major Shareholders

Individual or Organization	Number of shares held (thousands)	Percentage of total shares outstanding (%)
Moxley & Co.	120,253	6.55
The Master Trust Bank of Japan, Ltd. (Trust Account)	85,893	4.68
Tokio Marine & Nichido Fire Insurance Co., Ltd.	70,922	3.87
Japan Trustee Services Bank, Ltd. (Trust Account)	67,052	3.65
The Bank of Tokyo-Mitsubishi UFJ, Ltd.	61,144	3.33
Meiji Yasuda Life Insurance Company	56,888	3.10
Sompo Japan Insurance Inc.	43,666	2.38
Mitsui Sumitomo Insurance Co., Ltd.	35,039	1.91
Nippon Life Insurance Company	34,700	1.89
Japan Trustee Services Bank, Ltd. (Trust Account 4)	33,838	1.84

### ■ Breakdown of Shareholders by Type



### ■ Honda's Stock Price and Trading Volume in Tokyo Stock Exchange



\* The Company executed a two-for-one stock split for the Company's common stock effective July 1, 2006. The prices of shares on the Tokyo Stock Exchange prior to the split have been retroactively for consistency. Consequently, the prices shown here are not the actual prices of shares on the Tokyo Stock Exchange.